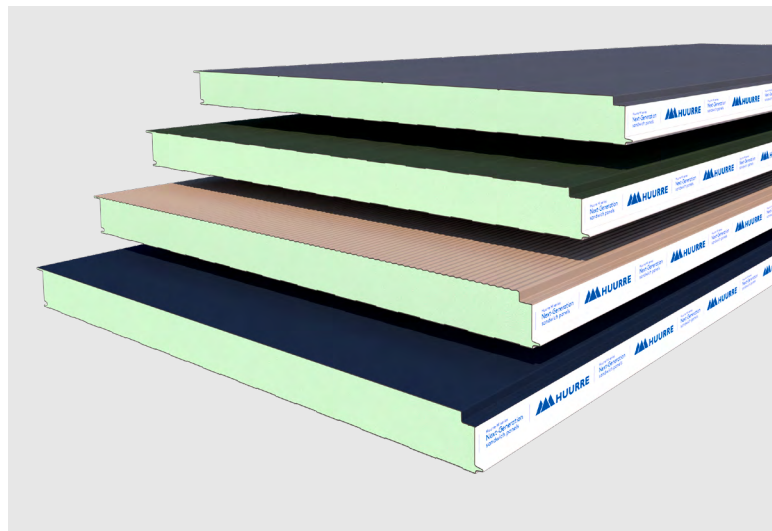
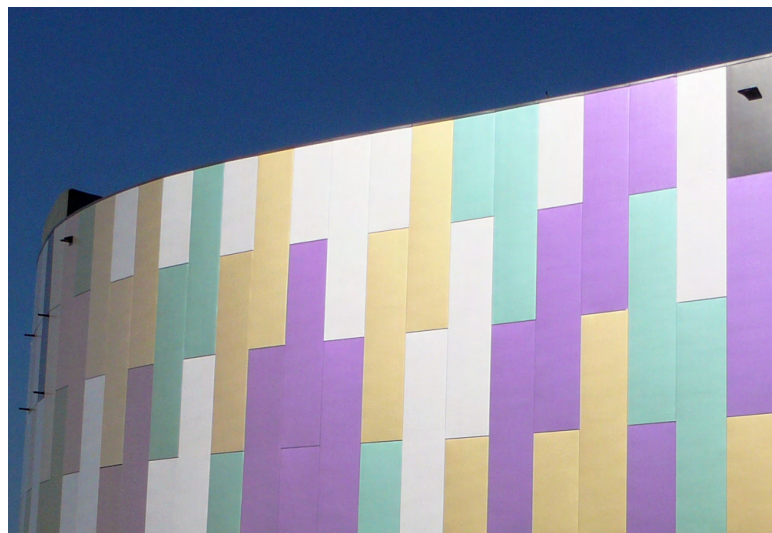


HI-ST Range of façade panels



High-performance insulating panels for facades and partitions, with various finishing options

- ▶ Rigid insulating core with high thermal performance (declared thermal conductivity of only 0.022 W/mK).
- ▶ Lightweight enclosure with the possibility of vertical or horizontal mounting. Also suitable for partitions.
- ▶ Structural steel sheets with four available finishes and different highly durable coating options.
- ▶ Lightweight enclosure with vertical or horizontal mounting options.
- ▶ It does not absorb water, maintaining its performance throughout its service life, and is not affected by biological agents.
- ▶ Quality and safety, guaranteed and certified.



HI-ST Façade panels

Insulating panels for facades and partitions



Description and applications

Sandwich panel with metal facings, rigid insulating core and concealed fixings for façade applications.

The fire performance of the entire HI-PIRM ST panel range is certified by FM Approvals under the FM 4880 standard, for use in interior partitions.

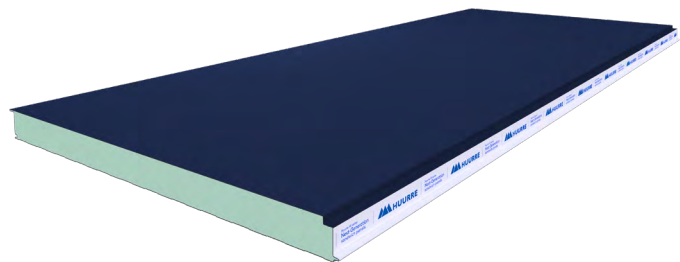
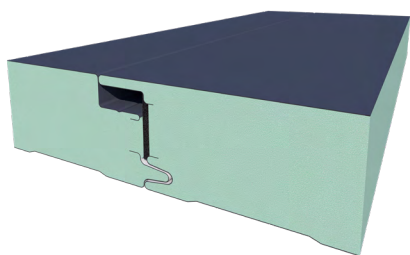
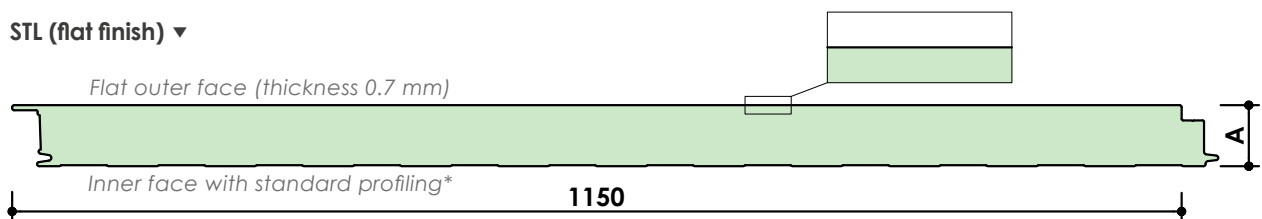
Available in four different finishes and various thicknesses, coatings and colors.

Insulating facades for industrial, residential, commercial buildings and sports facilities, as well as for partitions.

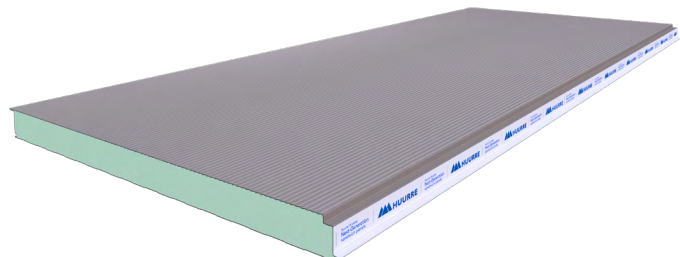
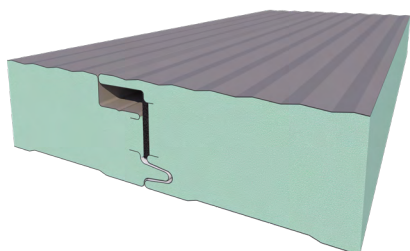
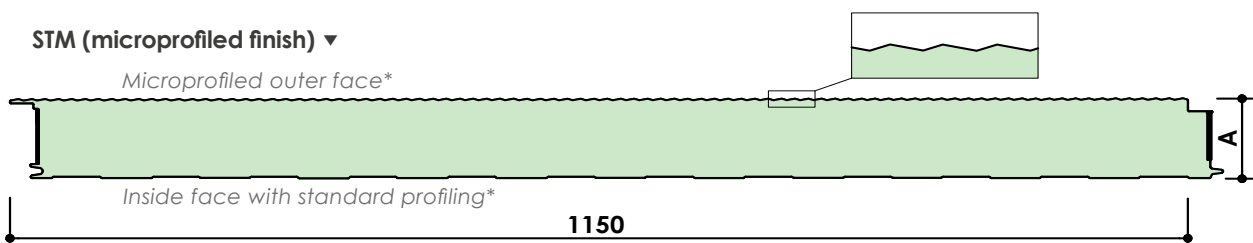


Finish options

STL (flat finish) ▾



STM (microprofiled finish) ▾

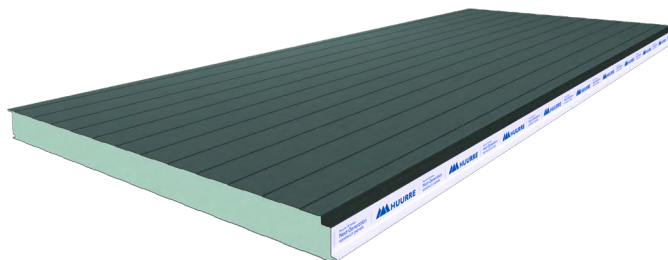
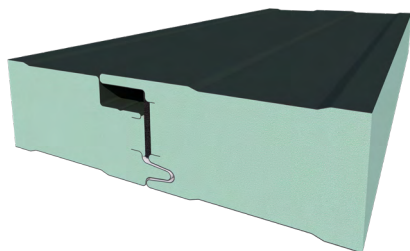
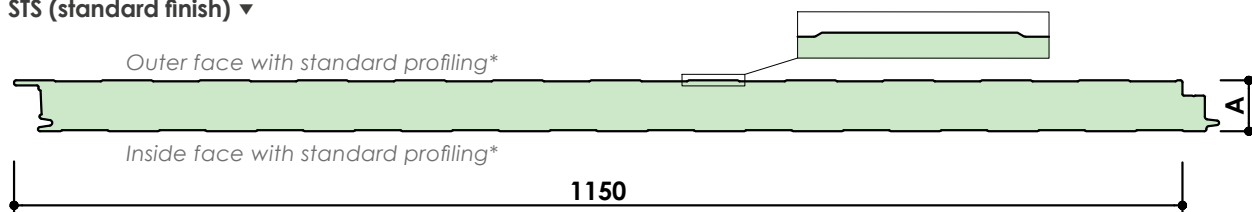


HI-ST Façade panels

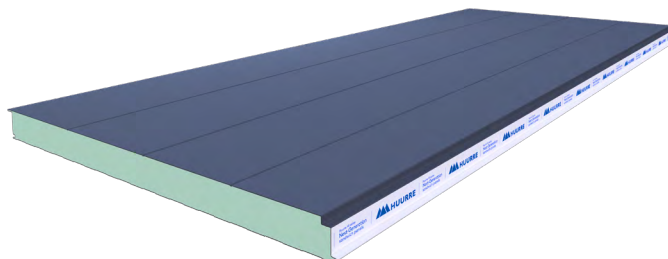
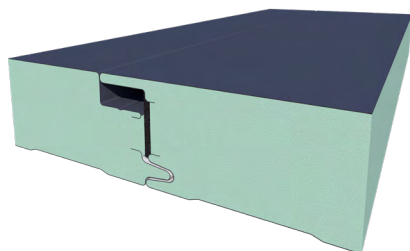
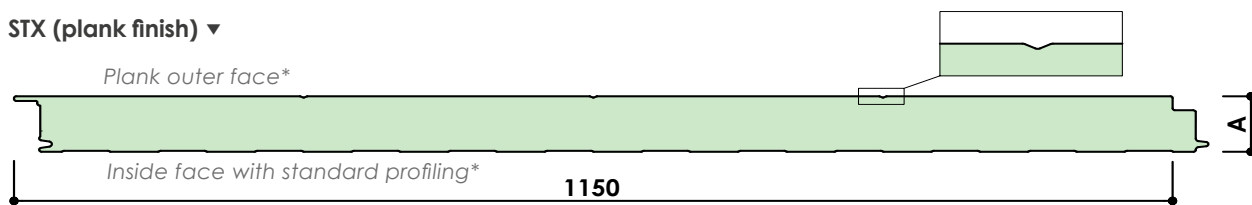
Insulating panels for facades and partitions



STS (standard finish) ▼



STX (plank finish) ▼



(*) Standard thickness 0.5 mm. Other thicknesses on demand.

Components

Insulating core

Rigid polyisocyanurate foam (PIR / PIRM) continuous injection.

Steel facing

Cold-profiled sheet from a coil of type S220GD structural steel of certified quality.

Flat outer face (STL), microprofiled (STM), standard profiling (STS) or plank (STX). All panels of the range have either standard profiling finish or flat finish in the inner face.

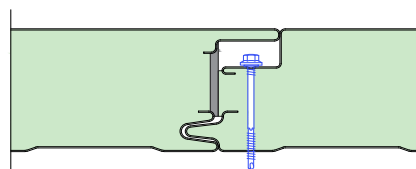
Standard sheet thicknesses: Flat outer face 0.7 mm for STL, and 0.5 mm for STM, STS and STX. Inner face 0.5 mm. Other thicknesses on demand.

Applicable standards

Hot-galvanized sheet according to EN 10346 and organic coatings according to EN 10169.

Hidden joint

Tongue and groove joint that hides the panel fastening to the load-bearing structure and protects the screw head and increases useful lifetime.



Water permeability*: Class A (watertight joints up to pressures of 1,200 Pa). Class A is the best classification according to EN 12865:2002 standard, for demanding applications with heavy rain and strong winds.

Air permeability*: Permeability of 0.00 m³/h · m² at 50 Pa for HI-PIR ST panels with seal and polyethylene foam.

(*) Applies to thicknesses equal to or greater than 60mm.

HI-ST Façade panels

Insulating panels for facades and partitions



Dimensions, mass and thermal properties

Useful width	1.150 mm						
Manufacturing length	2.0 to 13.5 m						
	13.5 to 16 m (special transport)						
Fresh thermal conductivity	0.020 W/mK						
Declared thermal conductivity ¹	0.022 W/mK (considering an aged core)						
Insulating core density	PIR: 40 (± 5) kg/m ³ PIRM: 40 (-2/+5) kg/m ³						
Thickness (A)	35	40	50	60	80	100	(mm)
Mass ^{2,3}	9.78	9.98	10.38	10.78	11.58	12.38	(kg/m ²)
Thermal transmittance ^{1,2} (PIR/PIRM)	0.62	0.54	0.43	0.36	0.27	0.22	(W/m ² K)
Thermal resistance ^{2,3} (PIR/PIRM)	1.72	1.94	2.40	2.85	3.76	4.67	(m ² K/W)

NOTES: (1) Thermal transmittance determined according to UNE-EN 14509:2014 standard, considering the effect of aging of the insulating core, and certified by the AENOR N mark.
(2) For 0.5/0.5mm sheets (int/ext). Consult for other options.

Available coatings

Table of coatings choice to guarantee the maximum durability of the panel, considering the classification of CP11 and RC1 suitable for healthy environments, and CP15 and RC5 suitable for very aggressive environments.

	Outdoor environment						Indoor environment						
	Rural without pollution	Urban/Industrial		Marine		Resistance		Non-aggressive environments		Aggressive and/or very humid environments	Resistance Indoor corrosion category		
		Moderate	Severe	Between 3 and 20 km	< 3 km ⁽¹⁾	Mixed	Outdoor corrosion category	UV	Low humidity			Medium humidity	
E5001	⊗	⊗	⊗	⊗	⊗	⊗	NA	NA	✓	⊗	⊗	⊗	⚠
Polyester 25 μ	✓	✓	⚠	⚠	⊗	⊗	⚠	⚠	✓	⊗	Ai3 ²	CPI2	
Polyester plus 25 μ	✓	✓	⚠	✓	⊗	⊗	RC3	RUV2	✓	✓	Ai3	CPI3	
HDS 35 μ	✓	✓	⚠	✓	⚠	⚠	RC4	RUV4	✓	✓	Ai3	CPI4	
PVDF 35 μ	✓	✓	⚠	✓	⚠	⚠	RC4	RUV4	✓	✓	Ai3	CPI4	
HDX 55 μ	✓	✓	✓	✓	✓	⚠	RC5	RUV4	✓	✓	Ai3	CPI4	
PET 50 μ	⊗	⊗	⊗	⊗	⊗	⊗	NA	NA	✓	✓	Ai5	CPI5	

✓ Suitable coating ⊗ Unsuitable coating ⚠ Check with HUURRE IBÉRICA (1) Please contact us for distances < 300 m. (2) Check conditions.

(NA) Non applicable. Consult with our Technical Department for other coatings.

HI-ST Façade panels

Insulating panels for facades and partitions



Reaction to fire

Fire reaction classification

EUROCLASS B-s1,d0

B: Very limited contribution to fire and will not lead to flashover¹

s1: Little or no smoke production

d0: No flaming droplets / particles

(1) Best classification possible for an organic type of material.

Reaction to fire determined according to UNE-EN 13501:1-2019 standard. In the case of HI-PIRM ST thicknesses 35, 40 and 50mm, in accordance with UNE-EN 13501-1:2017+A1:2010 standard (tested under the name "HI-PIR ST").

International FM Approvals Certification

The HI-PIRM ST panel range is FM APPROVED certified according to the following standard, ensuring high performance and limited fire spread.



FM 4880 Class 1* Fire resistance of building panels or interior finish materials.

The FM 4880 testing program ensures the fire performance of the HI-PIRM ST panel in interior partition applications. It does not include façade requirements under the FM 4881 standard.

(*) Subject to installation conditions and coatings. Please consult our technical department.

Environmental Product Declaration

The HI-ST panel has a product environmental declaration in accordance with ISO 14025:2006 and EN 15804:2012+A2:2019/AC:2021 standards.



Table of maximum spans

The following tables indicate the maximum distance between supports (m) depending on the thickness of the panel (mm) and the characteristic uniformly distributed pressure load (without factoring) in daN/m². Tables calculated according to the European Standard EN 14509:2013 for SLS and ULS. Consult us in case of upward loads (suction).

TWO SUPPORTS

		Pressure loads (daN/m ²)						
		50	75	100	125	150	175	200
L(m)	Thickness 35	3.74	3.22	2.84	2.55	3.32	2.06	1.80
	40	3.81	3.60	3.17	2.84	2.59	2.31	2.02
	50	4.72	4.28	3.76	3.39	3.10	2.86	2.56
	60	5.59	4.91	4.33	3.90	3.58	3.31	3.09
	80	7.15	6.04	5.23	4.68	4.27	3.95	3.70
	100	8.39	6.99	6.06	5.42	4.94	4.58	4.28

HI-ST Façade panels

Insulating panels for facades and partitions

THREE SUPPORTS

		Pressure loads (daN/m ²)							
		50	75	100	125	150	175	200	
L(m)		35	2.76	2.47	2.29	2.15	2.05	1.97	1.80
		40	3.43	3.02	2.77	2.59	2.43	2.31	2.02*
Thickness	50	4.25	3.70	3.33	3.07	2.87*	2.72*	2.56*	
	60	4.92	4.22	3.77	3.47	3.25*	3.07*	2.93*	
	80	6.17	5.21	4.65	4.26*	3.98*	3.76*	3.58*	
	100	8.05	6.75	5.97*	5.42*	4.94*	4.58*	4.28*	

1 daN/m² ≈ 1 kp/m²

NOTES: Support width = 50mm. (*) Support width > 50mm.

Tables valid for light-coloured panels. Please contact us for dark-coloured panels. Minimum external temperature considered -10°C.

Manufacturing quality and standards

The HI-ST panel range is manufactured using top-quality raw materials, together with automatic CIM production lines, which are continually monitored and subject to strict quality assurance controls to guarantee compliance with all HUURRE's high quality standards. The panel undergoes tests for bending, compression and traction, thermal conductivity, core density, accelerated ageing, and dimensional checks, among others.

HI-PIR ST and HI-PIRM ST panels certifications



CE marking according to UNE-EN 14509 standard.



Product certified with the "N" quality assurance stamp of AENOR. (Certificate 020/003381 for PIR and 020/003382 for PIRM).



CC FAT Avis Technique d'Application CSTB- HI-ST 2.3/18-1795_V2, under the name "Facadiso / HI-PIR ST".

Applies to HI-PIR ST in thicknesses 40, 60, 80 and 100mm. Please consult conditions.

FM APPROVED Brand, by FM Approvals

FM APPROVED certifications, by FM Approvals, are small- and large-scale tests in reference scenarios, supported by periodic factory audits to verify ongoing compliance with standards.

These certifications are subject to factors such as installation instructions, accessories, coatings, and panel orientation. Please consult our technical department for the conditions of each certification.

HI-ST Façade panels

Insulating panels for facades and partitions

Additional features

Resistance to biological agents

HUURRE panels, thanks to the closed structure of the insulating core, are resistant to attack by fungi, molds and other deteriorating biological agents.

Water absorption

The insulating core in the panel does not absorb water and thus maintains its performance throughout its lifetime. For this reason, they can be installed in adverse weather conditions.

Water-tightness

The careful tongue-and-groove design of the panel's hidden joints is certified by an external laboratory. Regarding the impermeability requirement of CTE enclosures, in sections 5.2.6, 5.2.7 and 5.2.8 of EN 14509:2013, it is determined that sandwich panels with metal faces are considered watertight, air-tight and water vapor tight. These parameters are only relevant for joints and fixings depending on the installation.

Sustainability

Both the steel and their metallic and organic coatings are free of SVHC (Substances of Very High Concern), in conformity with the requirements of the European REACH regulation.

The PIR and PIRM insulating cores contain 9.9 % post-consumer recycled plastic (rPET) in their formulation.

This is equivalent to reusing approximately 128 1.5-liter rPET plastic bottles for every cubic meter (m³) of insulating core produced, based on an average weight of 31 g per standard non-reusable bottle.



Warranty

HUURRE's HI-ST panel range is guaranteed for up to 25 years for the operational performance of the panel and up to 35 years for its coatings. Conditions apply.

Guaranteed and certified quality

HUURRE's Integrated Quality Management System, in accordance with ISO 9001, is certified by AENOR and IQNet (certificate ER-0947/1998).

HUURRE's Environmental Management System, in accordance with ISO 14001, and the Occupational Health and Safety System, in accordance with ISO 45001, are certified by AENOR and IQNet (certificates GA2003/0091 and ES-SST-0035/2010 respectively).

The Compliance Management System, in accordance with ISO 37301:2021, is certified by Advanced Certification Ltd.

HI-ST Façade panels

Insulating panels for facades and partitions



Download the latest version by scanning the QR code or by clicking [here](#)

Huurre Ibérica S.A.U.

Carrer Serinyà 43
Polígon Industrial el Trust
17244 Cassà de la Selva
Girona (Spain)

☎ (+34) 972 463 085

📠 (+34) 972 463 208

✉ huurre@huurreiberica.com



Huurre Ibérica S.A.U. reserves the right to modify the contents of this document without any prior warning. Every effort has been made to ensure that the content of this publication is accurate, but Huurre Ibérica S.A.U. and its affiliated companies are not responsible for errors or information that may be misleading. Suggestions regarding the final use or application of the products or work methods are merely informative and Huurre Ibérica S.A.U. and its affiliates do not accept any responsibility in this regard.